



6720 N. Teutonia Avenue
Milwaukee, WI 53209
(414) 352-9000 | pflow.com

BENEFITS

TO WORKING AT PFLOW

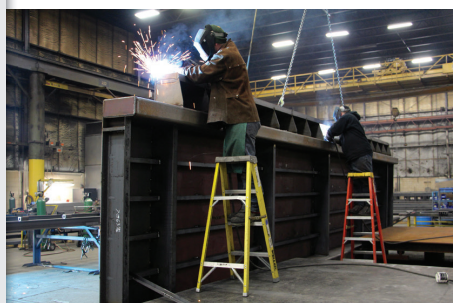
- Health Insurance
- Dental Insurance
- Vision Insurance
- Flexible Spending Account
- Life Insurance
- Disability Insurance
- 401(k)
- Bonuses
- Vacation (paid time off)
- Dependent Care Reimbursement
- Wellness Program
- Apprenticeships/Internships
- ESOP, Teledoc, ZooPass

INFO



- Employees: 200
- Year founded: 1977
- President: Pat Koppa

- facebook.com/PFlow-Industries-549541775078865
- linkedin.com/company/pflow-industries
- youtube.com/user/PflowVerticalLifts
- @PFlowIndustries



CORE VALUES

- P** **PRIDE & PASSION**
Be tenacious and resourceful.
- F** **FRIENDLY & FAIR**
Do the right thing.
- L** **LISTEN, LEARN & LEAD**
Seek a better way.
- O** **OWNERS & OPERATORS**
Act like it.
- W** **WORK & WIN TOGETHER**
As one TEAM.

WHO WE ARE

As the industry founder in 1977 and key author of state and federal codes, PFlow has literally written the book on vertical reciprocating conveyor (VRC) design and safety. VRCs are intended for the safe and effective vertical movement of materials (not people) between multiple levels in mezzanine, balcony, through-floor, interior, and exterior applications, and can lift loads from 10 lbs. to over 200,000 lbs.

PFlow's employee-owners are focused on creating innovative, robust, and reliable vertical lifting solutions engineered to perform safely and built to last, even under the toughest conditions. PFlow is an ESOP company with passionate employees who truly care about lifting our world.

We've provided vertical lifting solutions for a vast range of industries and companies including, Boeing, DHL, Lockheed Martin, SeaRay Boats, Shell Oil, the U.S. Navy, Tesla, Target, Walmart and Whole Foods.

STUFF WE MAKE

PFlow engineers VRCs to meet each customer's specific size, space, and weight requirements. Because of their structural support and enclosed carriage framework, PFlow VRCs keep material loads from falling, making them safer to use than fork or scissor lifts. PFlow also designs and manufactures Cartveyor® shopping cart conveyors, which run parallel to escalators and accommodate high shopping cart traffic in multi-level retail environments.

WORK HERE TODAY!

PFlow fosters a family-like culture based on core values to ensure we work and win together. As an employee-owned (ESOP) company, PFlow offers competitive wages and a generous benefits package, including year-end bonuses, Employee Stock Ownership contributions, generous 401k matching, competitive healthcare insurance, a generous PTO policy, 9 paid holidays and company-sponsored lunches and events.



THIS COULD BE YOU @ PFLOW



DANNY MCDOWELL | MIDWEST REGIONAL MANAGER

AGE: 43 | YEARS AT PFLOW: 5

EDUCATION/CERTIFICATION: Associates Degree - Carpentry

What do you do on a day-to-day basis at your job?

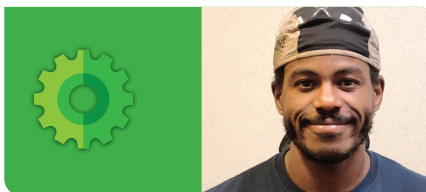
I consult with distributors, architects, and contractors, gathering information to enable solutions & recommendations designed to improve the end user's entire process while adding value by realizing optimized safety and efficiency.

How did you arrive at your current position? What was your professional or career path?

As a Project Manager with a mechanical mindset and a knack for relationship building, I managed projects with multiple stakeholders. That skillset provided a base for launching into the Regional Manager position where I can serve as a consultative partner.

What is the best part about your job?

The best part of the job is having the opportunity to create trusted partnerships with our customers by delivering value-added products and services.



KONDWANI HARLEAUX | WELDER

AGE: 36 | YEARS AT PFLOW: 1.5

EDUCATION/CERTIFICATION: Associates Degree - Computer Drafting / 2G Welding Certificate

What do you do on a day-to-day basis at your job?

Each day, I ensure I have the day's prints and all the parts required to ensure proper fitting of the assembly prior to welding the pieces together.

How did you arrive at your current position? What was your professional or career path?

I started as an assembler/material handler but wanted to learn more. I bought a welding helmet, asked a co-worker to teach me to weld, and practiced each day after my shift. 4 months later, I was fabricating, fitting and welding!

What is the best part about your job?

Learning valuable skills. I always wanted to build structures from metal and at PFlow, I had the opportunity to learn and practice.

CAREER PROGRESSION - REGIONAL MANAGER

\$60,000

Starter - Project Manager

\$80,000

Experienced - Senior Project Manager

\$100,000

Expert - Regional Manager

**SPECIAL PROJECTS MANAGER
\$75,000+**

**WELDER A
\$65,000+**

**ASSISTANT PROJECT MANAGER
\$45,000+**

**WELDER B
\$45,000+**



FUN STUFF

At PFlow we work hard and share our financial success as an ESOP while finding ways to lift our world and have fun. PFlow sponsors charitable events and rewards employees with things such as Brewers', Bucks' and Packers' tickets, company outings, values and safety awards and monthly company-sponsored lunches. If you're looking to join a fun and rewarding team, PFlow is the place for you!



NOW HIRING



FIELD SERVICE TECHNICIAN



WELDER



ASSEMBLER



CUSTOMER SERVICE REPRESENTATIVE

Want **MORE INFORMATION**
about **tours, internships,**
apprenticeships, job shadowing
& other opportunities?

CONTACT:

DIANA KUEMMERLEIN
TALENT ACQUISITION MANAGER
(414) 352-9000

DIANA@PFLOW.COM
LINKEDIN.COM/COMPANY/PFLOW-INDUSTRIES