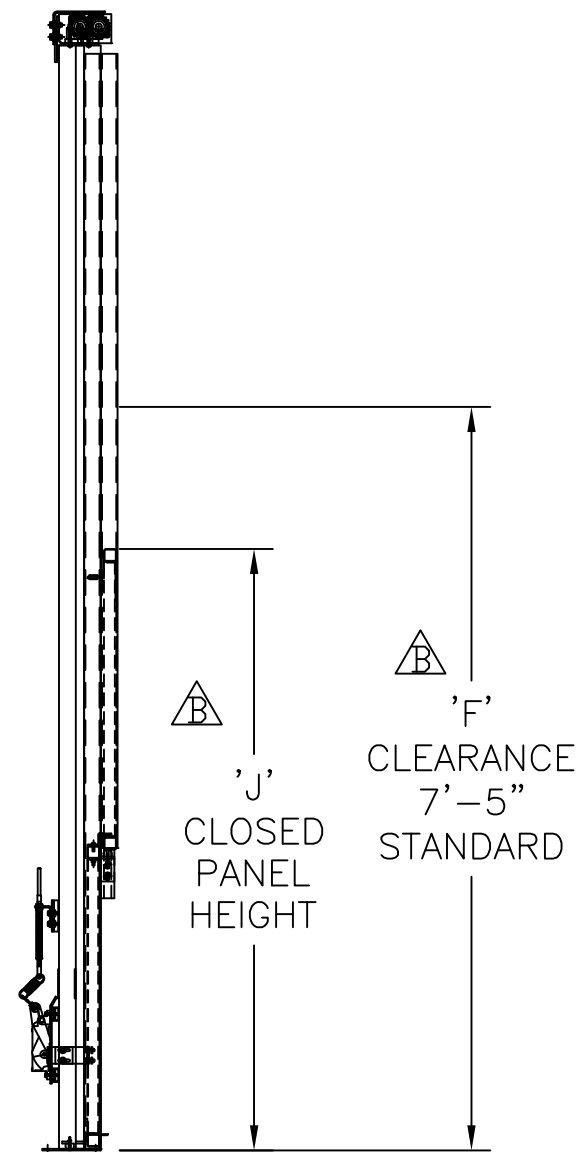
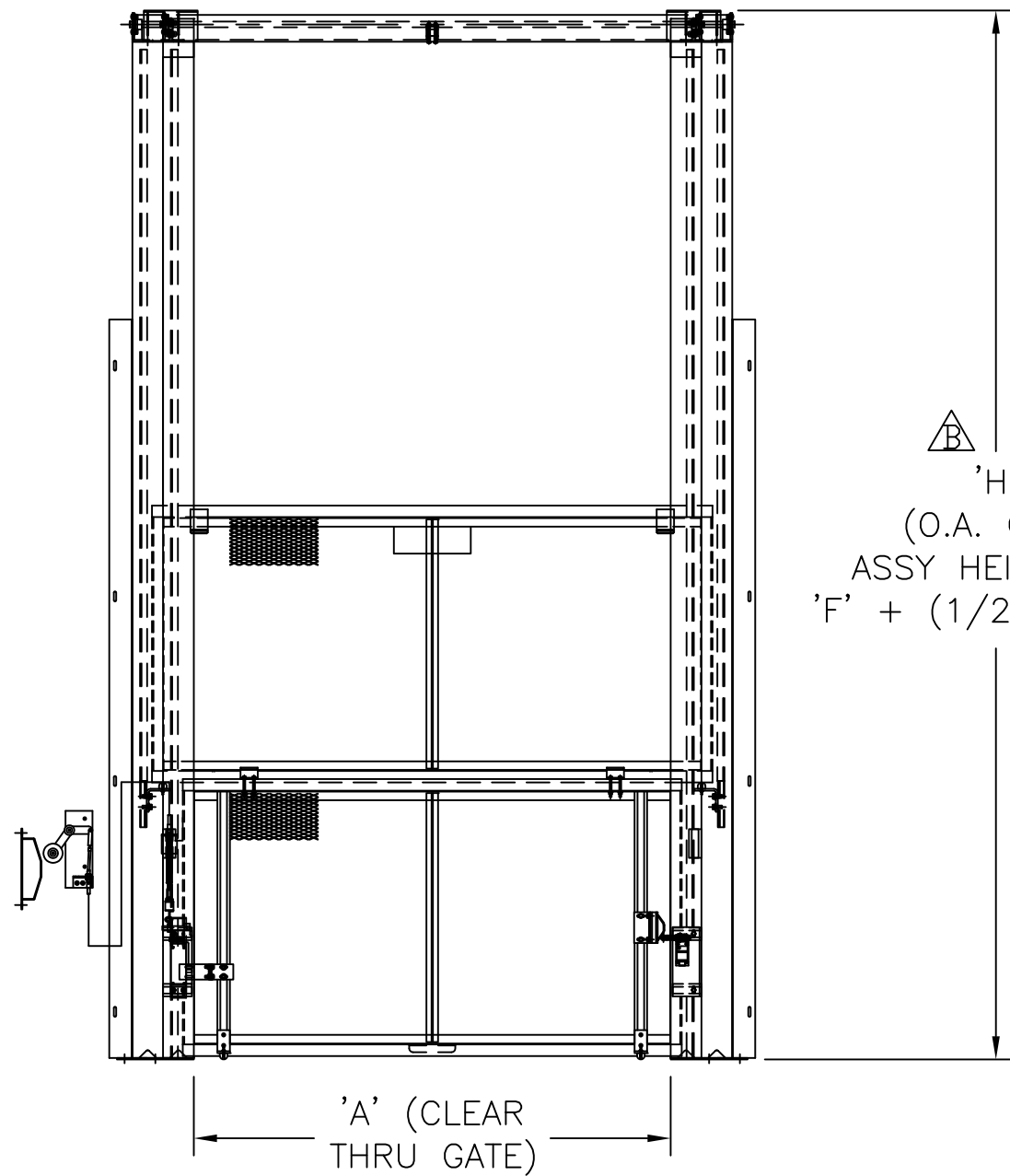
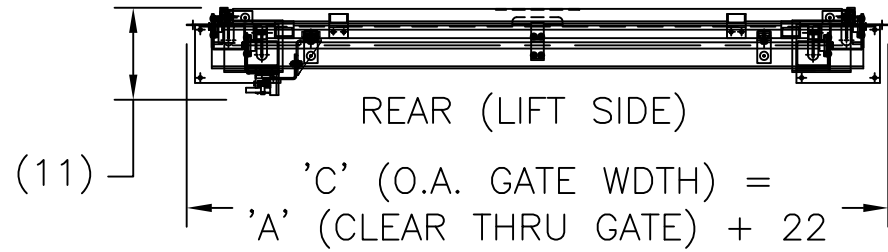


FRONT



BI-PANEL
VERTICAL ACTING GATE

- STANDARD HEIGHT IS:
- $\triangle B$ 10'-10" WITH 6'-0" COMBINED PANELS
- $\triangle B$ 9'-10" WITH 4'-0" COMBINED PANELS
- MAXIMUM WIDTH IS 17'-0"

INTERLOCKS

- $\triangle B$ - ANDERSON OR CABLE ACTUATED ANDERSON



MATERIAL HANDLING SOLUTIONS

6720 N. TEUTONIA AVE.
MILWAUKEE, WI 53209
P (414) 352-9000
F (414) 352-9002

THIS PRINT INCLUDING THE DESIGN AND PRINCIPLES OF CONSTRUCTION IS THE PROPERTY OF PFLOW INDUSTRIES, INC. AND MUST BE RETURNED ON DEMAND. THE INFORMATION CONTAINED HEREON IS CONFIDENTIAL AND MAY NOT BE USED NOR DIVULGED WITHOUT PERMISSION OF PFLOW INDUSTRIES, INC.

C	10/19/18	SJD	18.071
B	4/25/13	AEB	12.101
A	8/21/98	MHS	98.030

REV	DATE	BY	ECN
REVISIONS			

TITLE		BI-PANEL VERTICAL ACTING GATE DIMENSIONAL INFORMATION		
DATE	SCALE	DRAWING NUMBER	SHT	REV
6/19/98	N.T.S.	9424-0017	1	C
DRAWN	CHECKED		OF	
JWH			1	