

PLAN VIEW - LOWER LEVEL

C	7/20/18	AEB	18.071
B	2/13/13	AEB	12.101
A	9/29/00	MN	00.019
REV	DATE	BY	ECN
REVISIONS			

NOTES:

1.) ALL DIMENSIONS SHOWN REPRESENTATIVE OF AVERAGE APPLICATIONS. THESE DIMENSIONS WILL CHANGE BASED ON APPLICATION SPECIFIC CONDITIONS.

2.) CONSULT FACTORY BEFORE CONSTRUCTION OF PIT.

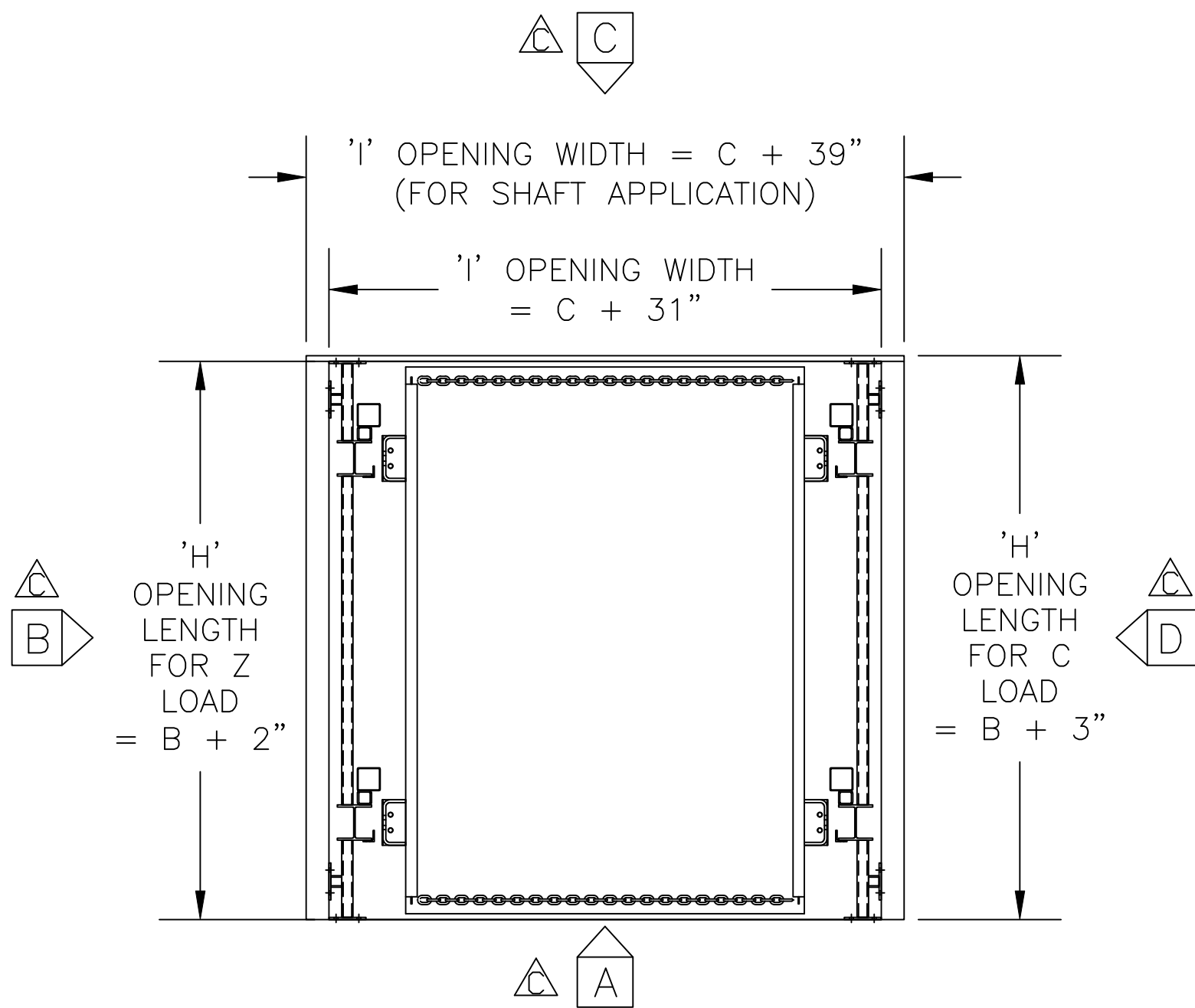


MATERIAL HANDLING SOLUTIONS

6720 N. TEUTONIA AVE.
MILWAUKEE, WI 53209
P (414) 352-9000
F (414) 352-9002

THIS PRINT INCLUDING THE DESIGN AND PRINCIPLES OF CONSTRUCTION IS THE PROPERTY OF PFLOW INDUSTRIES, INC. AND MUST BE RETURNED ON DEMAND. THE INFORMATION CONTAINED HEREON IS CONFIDENTIAL AND MAY NOT BE USED NOR DIVULGED WITHOUT PERMISSION OF PFLOW INDUSTRIES, INC.

TITLE					SERIES F DIMENSIONAL INFORMATION						
DATE	3/19/96	SCALE	N.T.S.	DRAWING NUMBER	9424-0001			SHT	1	REV	C
DRAWN	PCP	CHECKED						OF	4		



PLAN VIEW - UPPER LEVEL

C	7/20/18	AEB	18.071
B	2/13/13	AEB	12.101
A	9/29/00	MN	00.019
REV	DATE	BY	ECN
REVISIONS			

NOTES:

1.) ALL DIMENSIONS SHOWN REPRESENTATIVE OF AVERAGE APPLICATIONS. THESE DIMENSIONS WILL CHANGE BASED ON APPLICATION SPECIFIC CONDITIONS.

2.) CONSULT FACTORY BEFORE CONSTRUCTION OF PIT.

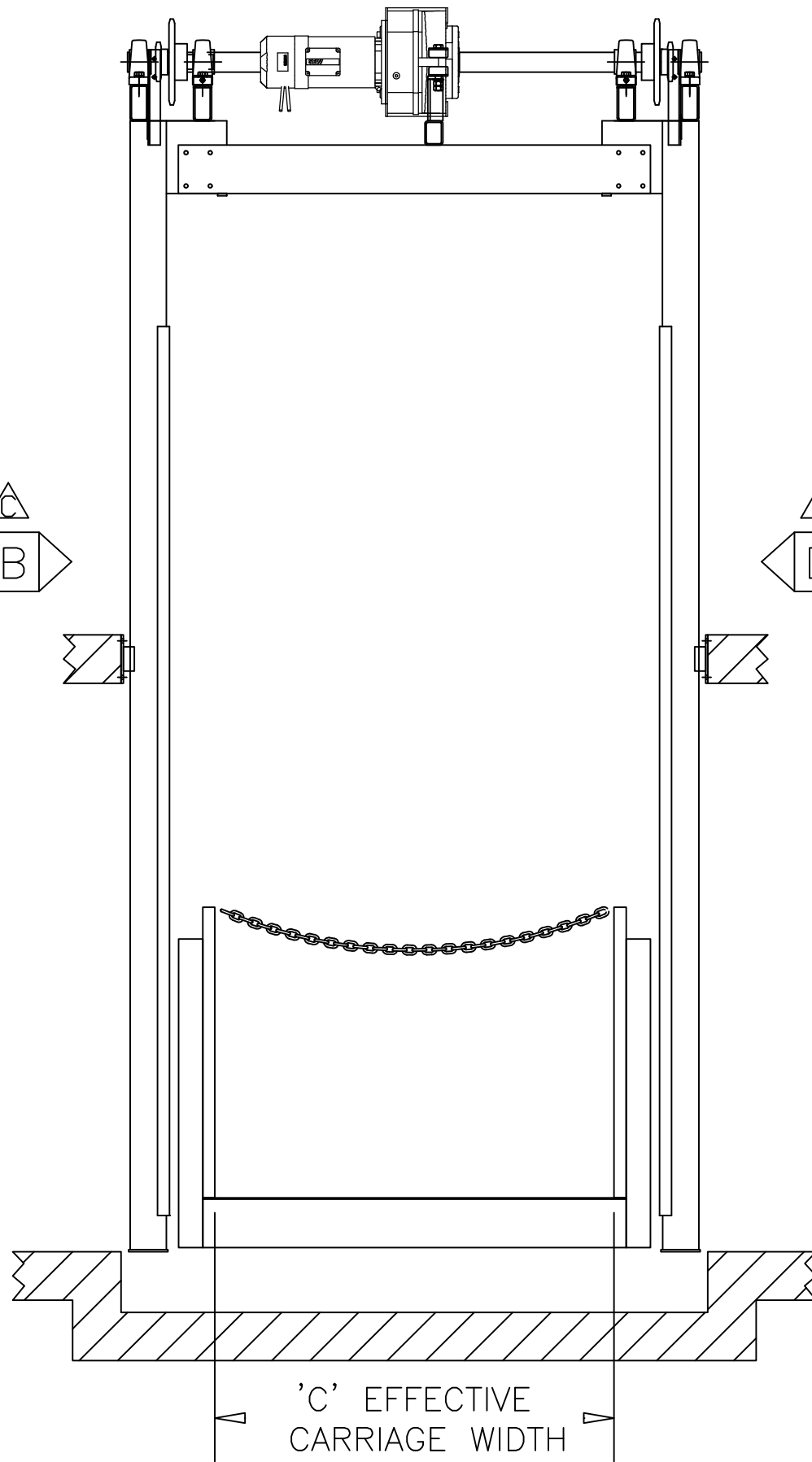


MATERIAL HANDLING SOLUTIONS

6720 N. TEUTONIA AVE.
MILWAUKEE, WI 53209
P (414) 352-9000
F (414) 352-9002

THIS PRINT INCLUDING THE DESIGN AND PRINCIPLES OF CONSTRUCTION IS THE PROPERTY OF PFLOW INDUSTRIES, INC. AND MUST BE RETURNED ON DEMAND. THE INFORMATION CONTAINED HEREON IS CONFIDENTIAL AND MAY NOT BE USED NOR DIVULGED WITHOUT PERMISSION OF PFLOW INDUSTRIES, INC.

TITLE					SERIES F DIMENSIONAL INFORMATION						
DATE	3/19/96	SCALE	N.T.S.	DRAWING NUMBER	9424-0001			SHT	2	REV	C
DRAWN	PCP	CHECKED						OF	4		



VIEW A

C	7/20/18	AEB	18.071
B	2/13/13	AEB	12.101
A	9/29/00	MN	00.019
REV	DATE	BY	ECN
REVISIONS			

NOTES:

1.) ALL DIMENSIONS SHOWN REPRESENTATIVE OF AVERAGE APPLICATIONS. THESE DIMENSIONS WILL CHANGE BASED ON APPLICATION SPECIFIC CONDITIONS.

2.) CONSULT FACTORY BEFORE CONSTRUCTION OF PIT.



MATERIAL HANDLING SOLUTIONS

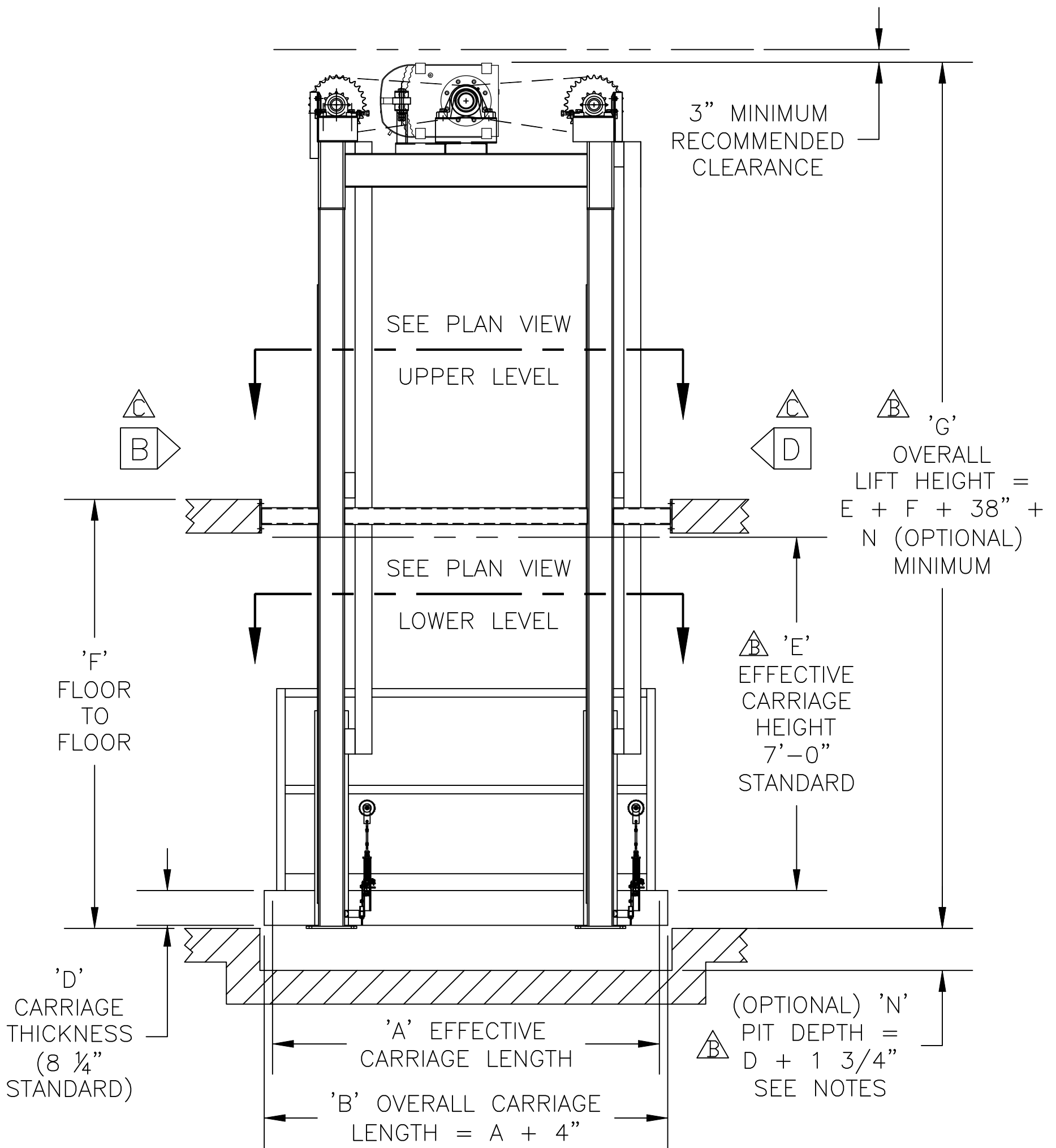
6720 N. TEUTONIA AVE.
MILWAUKEE, WI 53209
P (414) 352-9000
F (414) 352-9002

THIS PRINT INCLUDING THE DESIGN AND PRINCIPLES OF CONSTRUCTION IS THE PROPERTY OF PFLOW INDUSTRIES, INC. AND MUST BE RETURNED ON DEMAND. THE INFORMATION CONTAINED HEREON IS CONFIDENTIAL AND MAY NOT BE USED NOR DIVULGED WITHOUT PERMISSION OF PFLOW INDUSTRIES, INC.

TITLE

SERIES F
DIMENSIONAL INFORMATION

DATE	3/19/96	SCALE	N.T.S.	DRAWING NUMBER	9424-0001	SHT	3	REV	C
DRAWN	PCP	CHECKED				OF	4		



VIEW D

C	7/20/18	AEB	18.071
B	2/13/13	AEB	12.101
A	9/29/00	MN	00.019
REV	DATE	BY	ECN
REVISIONS			



MATERIAL HANDLING SOLUTIONS

6720 N. TEUTONIA AVE.
MILWAUKEE, WI 53209
P (414) 352-9000
F (414) 352-9002

NOTES:

1.) ALL DIMENSIONS SHOWN REPRESENTATIVE OF AVERAGE APPLICATIONS. THESE DIMENSIONS WILL CHANGE BASED ON APPLICATION SPECIFIC CONDITIONS.

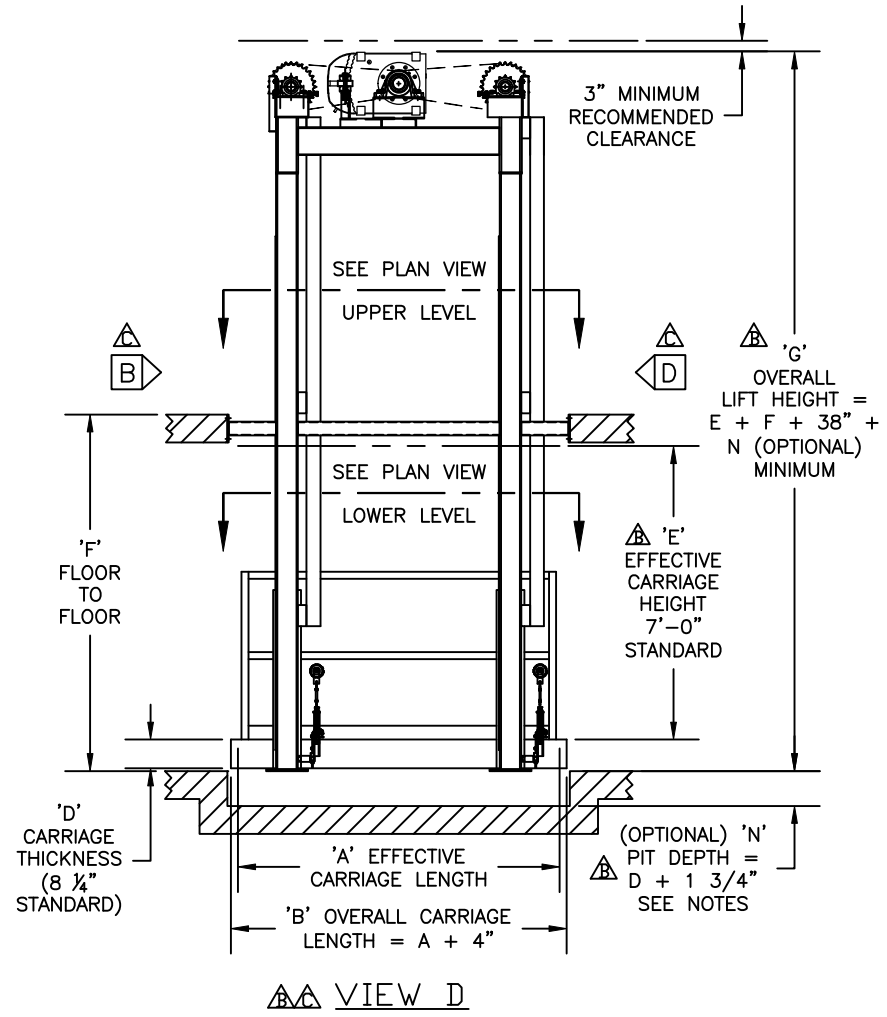
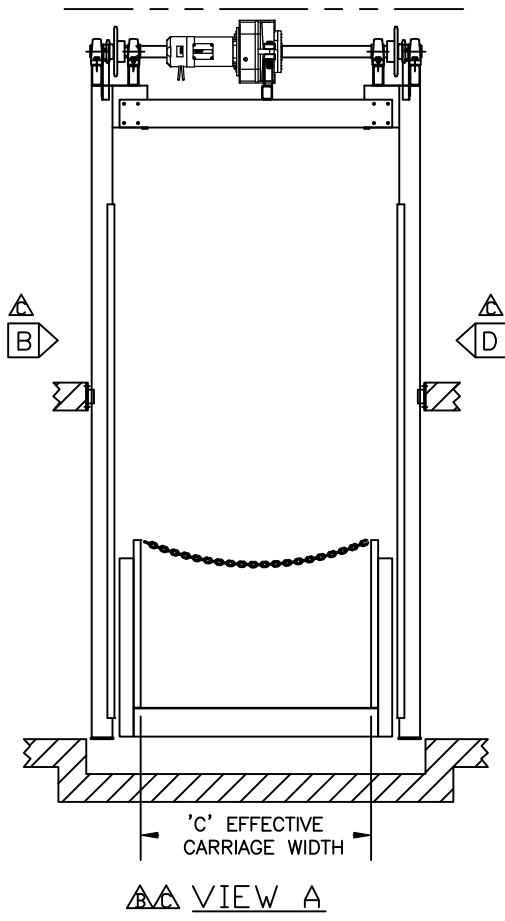
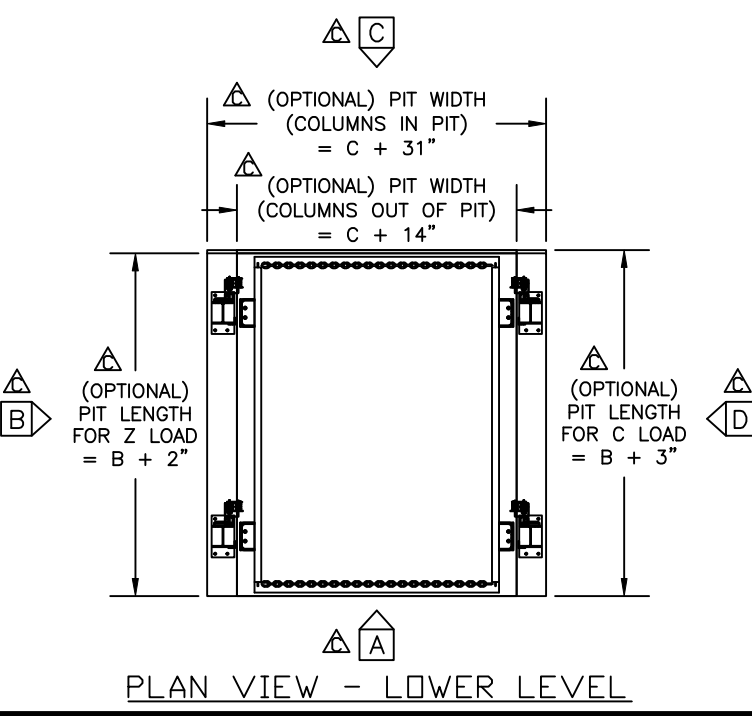
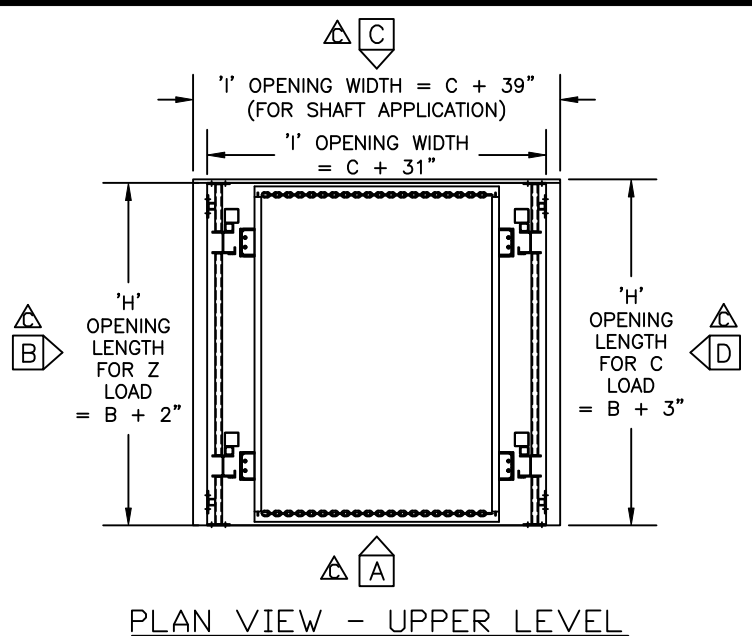
2.) CONSULT FACTORY BEFORE CONSTRUCTION OF PIT.

THIS PRINT INCLUDING THE DESIGN AND PRINCIPLES OF CONSTRUCTION IS THE PROPERTY OF PFLOW INDUSTRIES, INC. AND MUST BE RETURNED ON DEMAND. THE INFORMATION CONTAINED HEREON IS CONFIDENTIAL AND MAY NOT BE USED NOR DIVULGED WITHOUT PERMISSION OF PFLOW INDUSTRIES, INC.

TITLE

SERIES F
DIMENSIONAL INFORMATION

DATE	3/19/96	SCALE	N.T.S.	DRAWING NUMBER	9424-0001	SHT	4	REV	C
DRAWN	PCP	CHECKED				OF	4		

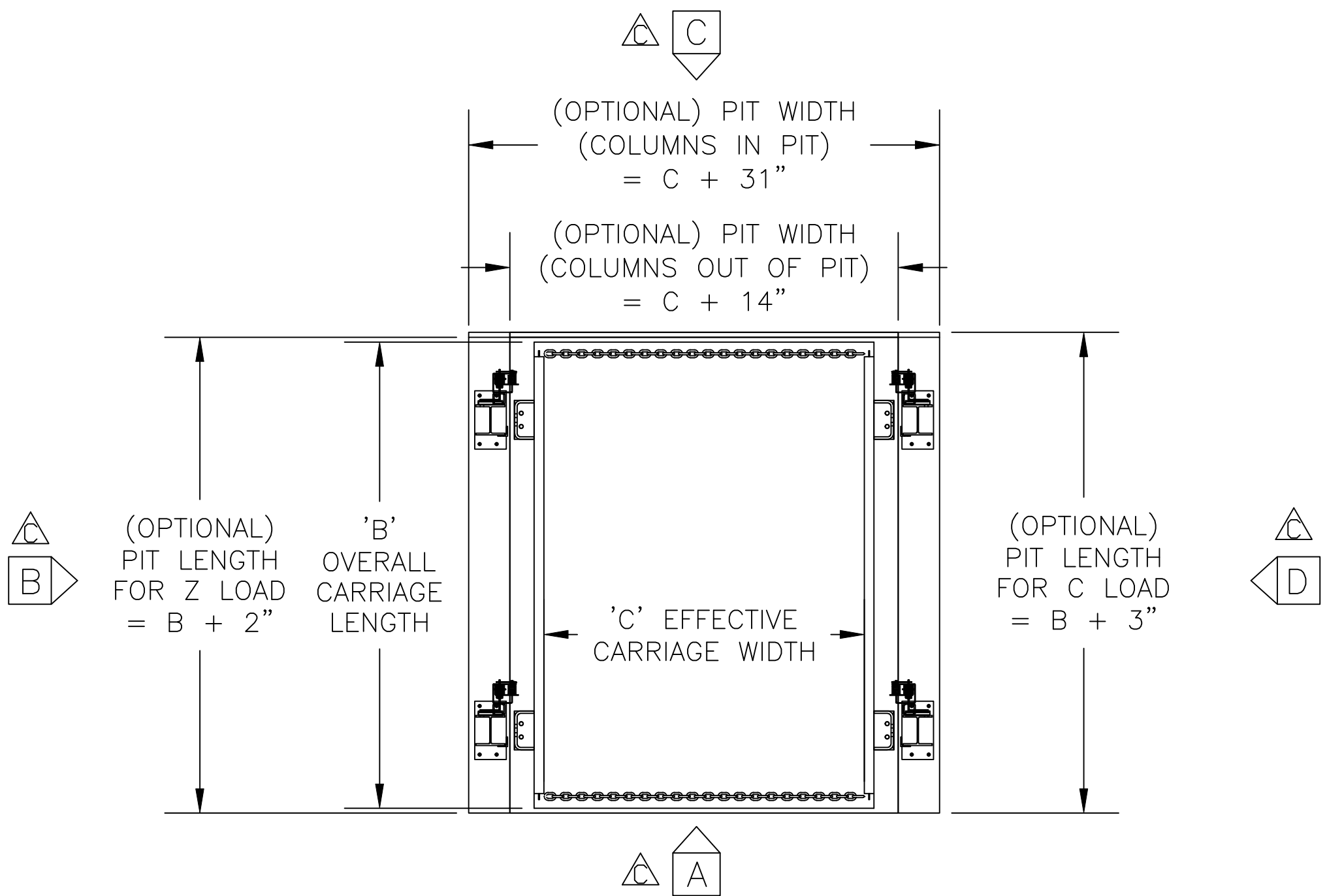


NOTES:
 1.) ALL DIMENSIONS SHOWN REPRESENTATIVE OF AVERAGE APPLICATIONS. THESE DIMENSIONS WILL CHANGE BASED ON APPLICATION SPECIFIC CONDITIONS.
 2.) CONSULT FACTORY BEFORE CONSTRUCTION OF PIT.

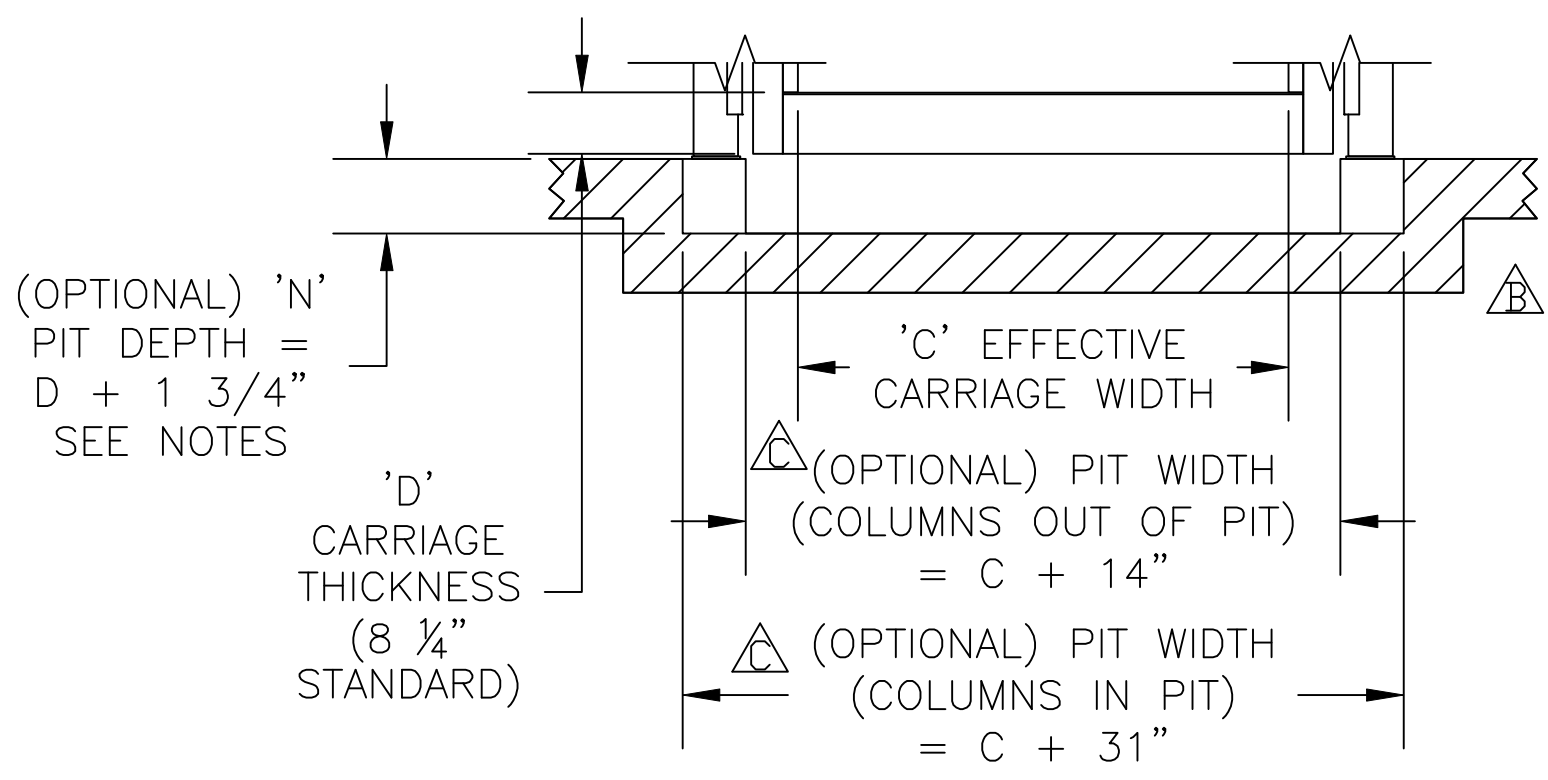
PFLOW INDUSTRIES MATERIAL HANDLING SOLUTIONS
 6720 N. TEUTONIA AVE. MILWAUKEE, WI 53209
 P (414) 352-9000 F (414) 352-9002

THIS PRINT INCLUDING THE DESIGN AND PRINCIPLES OF CONSTRUCTION IS THE PROPERTY OF PFLOW INDUSTRIES, INC. AND MUST BE RETURNED ON DEMAND. THE INFORMATION CONTAINED HEREON IS CONFIDENTIAL AND MAY NOT BE USED NOR DIVULGED WITHOUT PERMISSION OF PFLOW INDUSTRIES, INC.

REV	DATE	BY	ECN	DATE	SCALE	DRAWING NUMBER	SHT	REV
C	7/20/18	AEB	18.071	3/19/96	N.T.S.	9424-0001	1	C
B	2/13/13	AEB	12.101				1	
A	9/29/00	MN	00.019				1	
REVISIONS				DRAWN	CHECKED			
				PCP				



PLAN VIEW - LOWER LEVEL



VIEW A

C	7/20/18	AEB	18.071
B	2/13/13	AEB	12.101
A	9/29/00	MN	00.019
REV	DATE	BY	ECN

REVISIONS

NOTES:

1.) ALL DIMENSIONS SHOWN REPRESENTATIVE OF AVERAGE APPLICATIONS. THESE DIMENSIONS WILL CHANGE BASED ON APPLICATION SPECIFIC CONDITIONS.

2.) CONSULT FACTORY BEFORE CONSTRUCTION OF PIT.



MATERIAL HANDLING SOLUTIONS

6720 N. TEUTONIA AVE.
MILWAUKEE, WI 53209
P (414) 352-9000
F (414) 352-9002

THIS PRINT INCLUDING THE DESIGN AND PRINCIPLES OF CONSTRUCTION IS THE PROPERTY OF PFLOW INDUSTRIES, INC. AND MUST BE RETURNED ON DEMAND. THE INFORMATION CONTAINED HEREON IS CONFIDENTIAL AND MAY NOT BE USED NOR DIVULGED WITHOUT PERMISSION OF PFLOW INDUSTRIES, INC.

TITLE		SERIES F PIT DIMENSIONAL INFORMATION		
DATE	3/19/96	SCALE	N.T.S.	DRAWING NUMBER
DRAWN	PCP	CHECKED		9424-0001
SHT	1	REV	C	
OF	1			