

PLAN VIEW - LOWER LEVEL



- NOTES:
1. ALL DIMENSIONS SHOWN ARE REPRESENTATIVE OF AVERAGE APPLICATIONS. THESE DIMENSIONS WILL CHANGE BASED ON APPLICATION SPECIFIC CONDITIONS.
  2. CONSULT FACTORY BEFORE CONSTRUCTION OF PIT.
  3. IF CARRIAGE IS OVER 6'-0" SQ. OR 3000#, CONSULT FACTORY.
  4. LOAD HEIGHT IS NOT RELEVANT TO THE BACKFRAME HEIGHT OF THIS UNIT.
  5. ACTUAL OVERALL UNIT HEIGHT MAY BE LESS BASED ON APPLICATION. CONSULT FACTORY FOR ACTUAL HEIGHT.



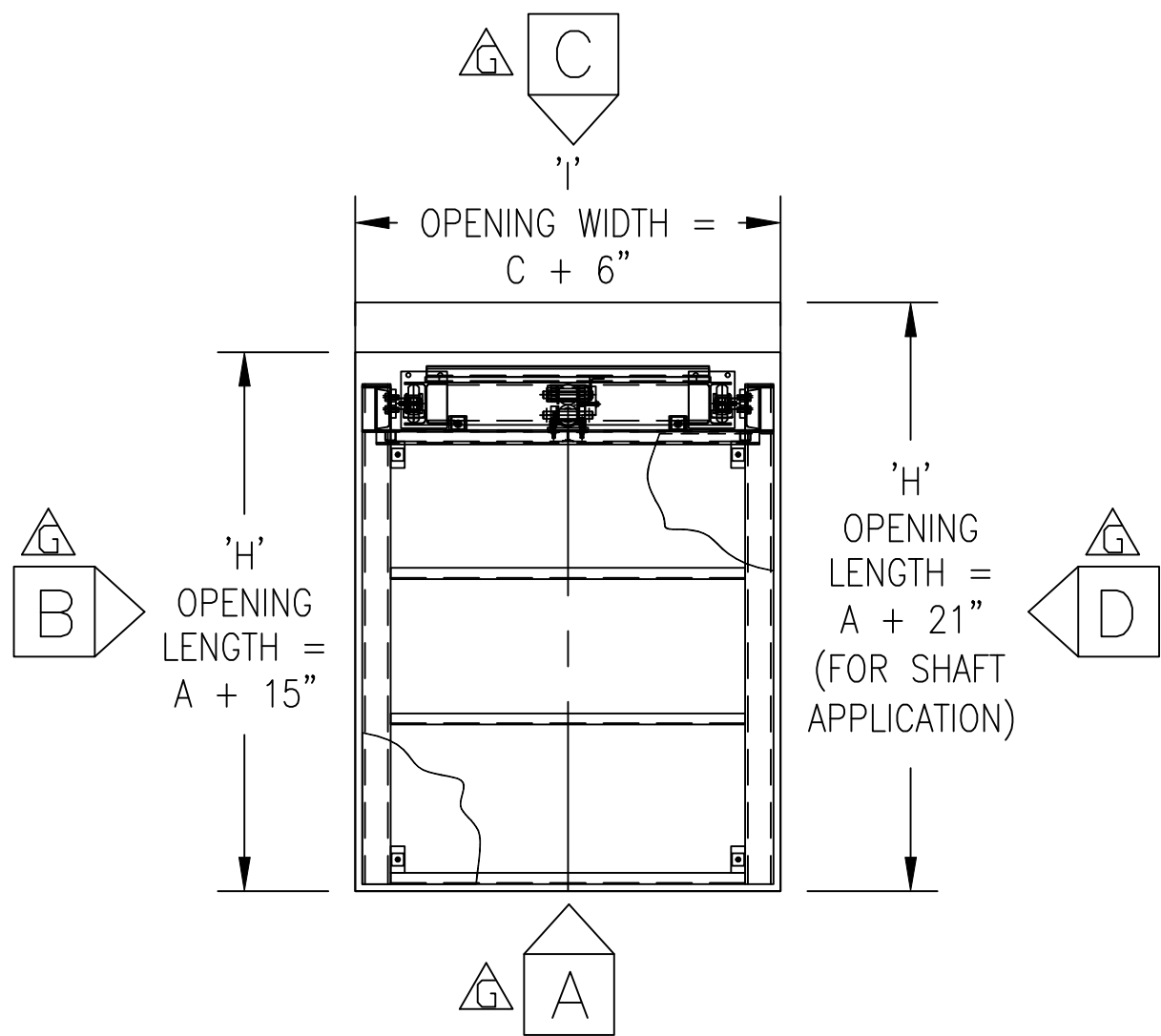
**MATERIAL HANDLING SOLUTIONS**

6720 N. TEUTONIA AVE.  
MILWAUKEE, WI 53209  
P (414) 352-9000  
F (414) 352-9002

G	10/26/18	AEB	18.071
F	4/25/13	AEB	12.101
E	10.13.06	MRR	06.017
D	12/13/01	MN	01.030
C	2/4/99	MHS	98.052
B	12/12/97	MHS	97.057
REV	DATE	BY	ECN
REVISIONS			

THIS PRINT INCLUDING THE DESIGN AND PRINCIPLES OF CONSTRUCTION IS THE PROPERTY OF PFLOW INDUSTRIES, INC. AND MUST BE RETURNED ON DEMAND. THE INFORMATION CONTAINED HEREON IS CONFIDENTIAL AND MAY NOT BE USED NOR DIVULGED WITHOUT PERMISSION OF PFLOW INDUSTRIES, INC.

TITLE				
SERIES D DIMENSIONAL INFORMATION				
DATE	3/19/96	SCALE	N.T.S.	DRAWING NUMBER
DRAWN	PCP	CHECKED		9424-0008
				SHT 1 OF 4
				REV G



PLAN VIEW - UPPER LEVEL



- NOTES:
1. ALL DIMENSIONS SHOWN ARE REPRESENTATIVE OF AVERAGE APPLICATIONS. THESE DIMENSIONS WILL CHANGE BASED ON APPLICATION SPECIFIC CONDITIONS.
  2. CONSULT FACTORY BEFORE CONSTRUCTION OF PIT.
  3. IF CARRIAGE IS OVER 6'-0" SQ. OR 3000#, CONSULT FACTORY.
  4. LOAD HEIGHT IS NOT RELEVANT TO THE BACKFRAME HEIGHT OF THIS UNIT.
  5. ACTUAL OVERALL UNIT HEIGHT MAY BE LESS BASED ON APPLICATION. CONSULT FACTORY FOR ACTUAL HEIGHT.



**MATERIAL HANDLING SOLUTIONS**

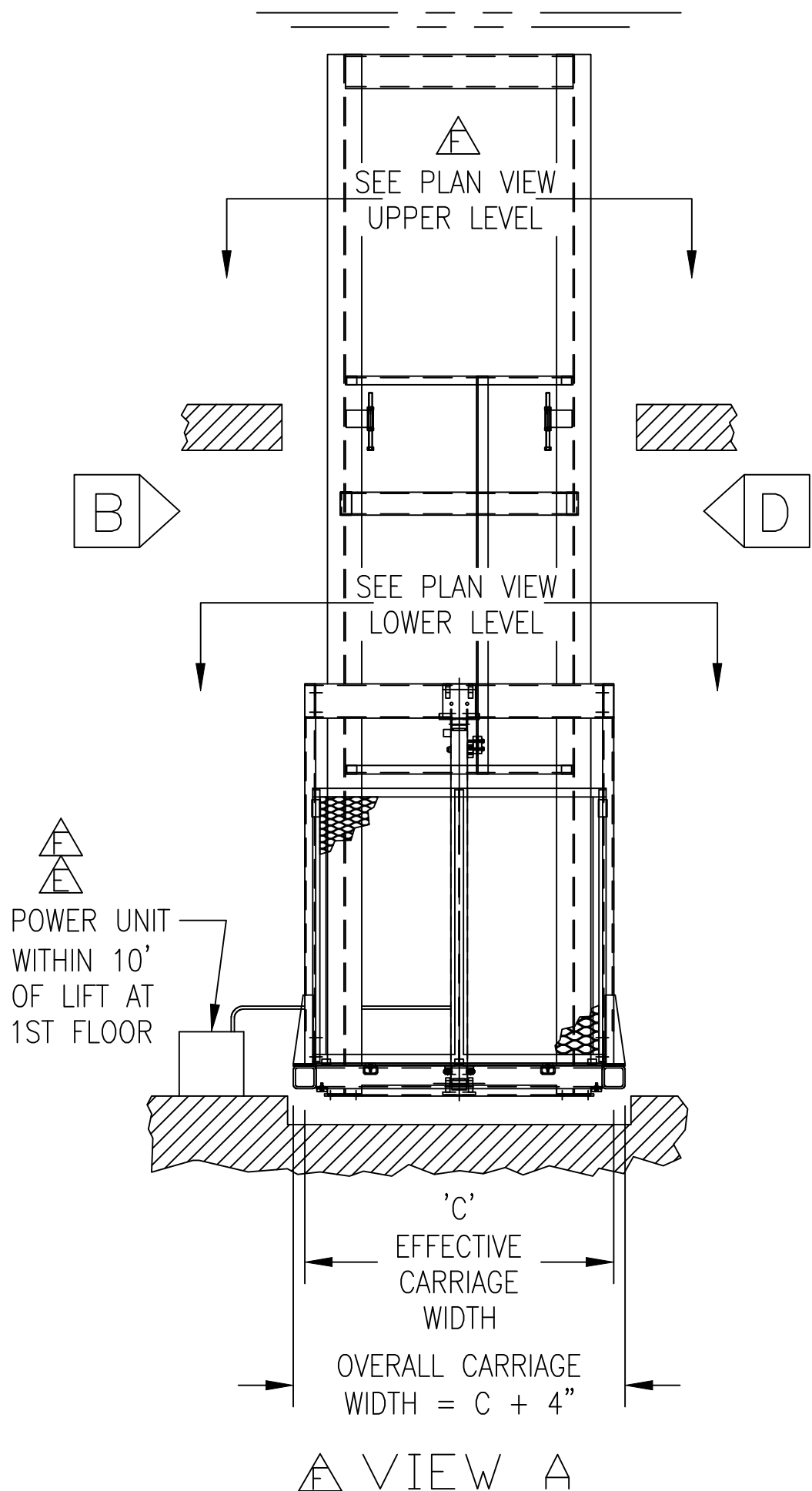
6720 N. TEUTONIA AVE.  
MILWAUKEE, WI 53209  
P (414) 352-9000  
F (414) 352-9002

G	10/26/18	AEB	18.071
F	4/25/13	AEB	12.101
E	10.13.06	MRR	06.017
D	12/13/01	MN	01.030
C	2/4/99	MHS	98.052
B	12/12/97	MHS	97.057
REV	DATE	BY	ECN

REVISIONS

THIS PRINT INCLUDING THE DESIGN AND PRINCIPLES OF CONSTRUCTION IS THE PROPERTY OF PFLOW INDUSTRIES, INC. AND MUST BE RETURNED ON DEMAND. THE INFORMATION CONTAINED HEREON IS CONFIDENTIAL AND MAY NOT BE USED NOR DIVULGED WITHOUT PERMISSION OF PFLOW INDUSTRIES, INC.

TITLE				
SERIES D DIMENSIONAL INFORMATION				
DATE	3/19/96	SCALE	N.T.S.	DRAWING NUMBER
DRAWN	PCP	CHECKED		9424-0008
				SHT 2 OF 4
				REV G



VIEW A



- NOTES:
1. ALL DIMENSIONS SHOWN ARE REPRESENTATIVE OF AVERAGE APPLICATIONS. THESE DIMENSIONS WILL CHANGE BASED ON APPLICATION SPECIFIC CONDITIONS.
  2. CONSULT FACTORY BEFORE CONSTRUCTION OF PIT.
  3. IF CARRIAGE IS OVER 6'-0" SQ. OR 3000#, CONSULT FACTORY.
  4. LOAD HEIGHT IS NOT RELEVANT TO THE BACKFRAME HEIGHT OF THIS UNIT.
  5. ACTUAL OVERALL UNIT HEIGHT MAY BE LESS BASED ON APPLICATION. CONSULT FACTORY FOR ACTUAL HEIGHT.



MATERIAL HANDLING SOLUTIONS

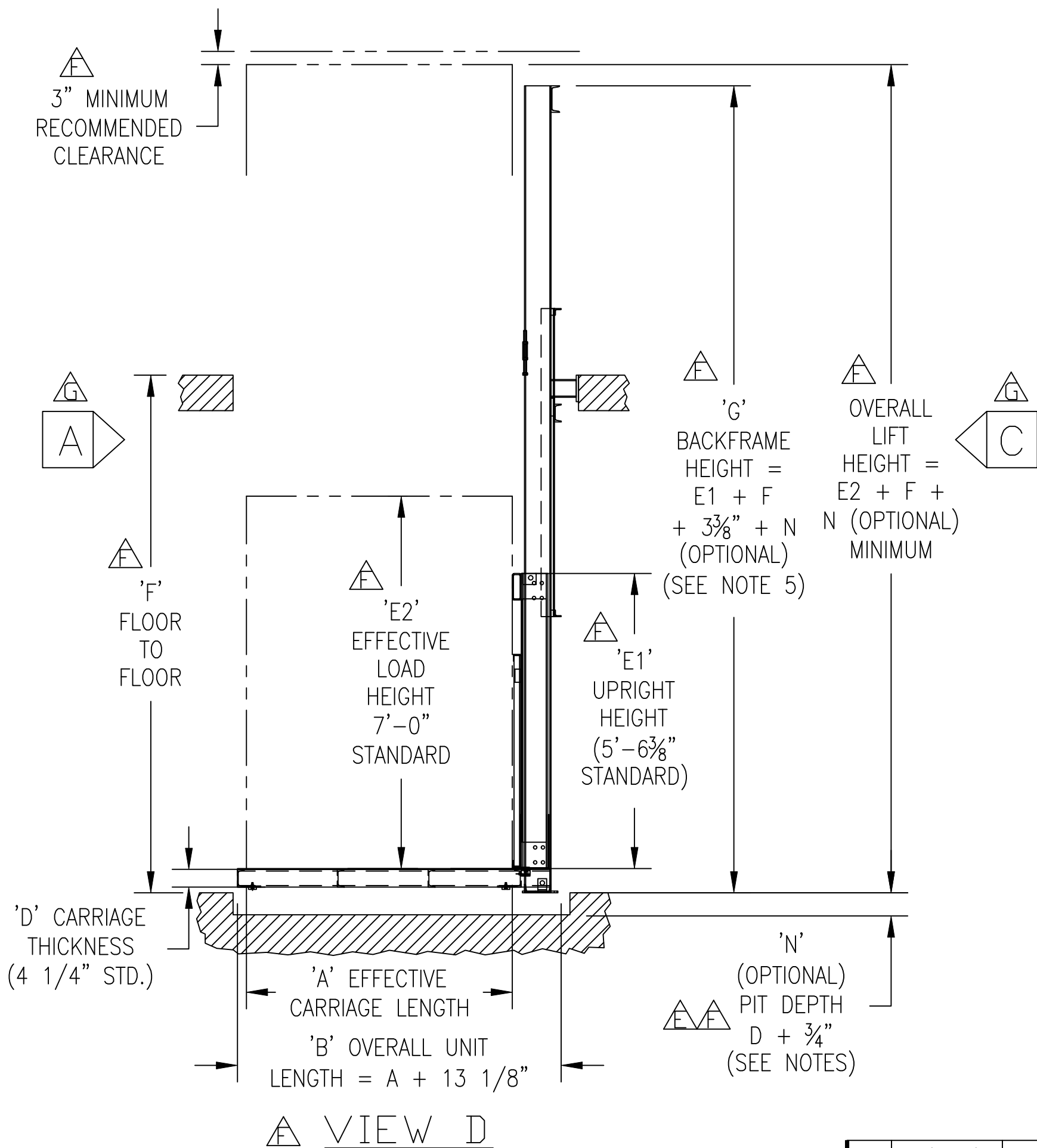
6720 N. TEUTONIA AVE.  
MILWAUKEE, WI 53209  
P (414) 352-9000  
F (414) 352-9002

G	10/26/18	AEB	18.071
F	4/25/13	AEB	12.101
E	10.13.06	MRR	06.017
D	12/13/01	MN	01.030
C	2/4/99	MHS	98.052
B	12/12/97	MHS	97.057
REV	DATE	BY	ECN

REVISIONS

THIS PRINT INCLUDING THE DESIGN AND PRINCIPLES OF CONSTRUCTION IS THE PROPERTY OF PFLOW INDUSTRIES, INC. AND MUST BE RETURNED ON DEMAND. THE INFORMATION CONTAINED HEREON IS CONFIDENTIAL AND MAY NOT BE USED NOR DIVULGED WITHOUT PERMISSION OF PFLOW INDUSTRIES, INC.

TITLE				
SERIES D DIMENSIONAL INFORMATION				
DATE	3/19/96	SCALE	N.T.S.	DRAWING NUMBER
DRAWN	PCP	CHECKED		9424-0008
				SHT 3 OF 4
				REV G



VIEW D



NOTES:

1. ALL DIMENSIONS SHOWN ARE REPRESENTATIVE OF AVERAGE APPLICATIONS. THESE DIMENSIONS WILL CHANGE BASED ON APPLICATION SPECIFIC CONDITIONS.
2. CONSULT FACTORY BEFORE CONSTRUCTION OF PIT.
3. IF CARRIAGE IS OVER 6'-0" SQ. OR 3000#, CONSULT FACTORY.
4. LOAD HEIGHT IS NOT RELEVANT TO THE BACKFRAME HEIGHT OF THIS UNIT.
5. ACTUAL OVERALL UNIT HEIGHT MAY BE LESS BASED ON APPLICATION. CONSULT FACTORY FOR ACTUAL HEIGHT.

G	10/26/18	AEB	18.071
F	4/25/13	AEB	12.101
E	10.13.06	MRR	06.017
D	12/13/01	MN	01.030
C	2/4/99	MHS	98.052
B	12/12/97	MHS	97.057
REV	DATE	BY	ECN
REVISIONS			

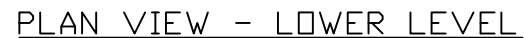
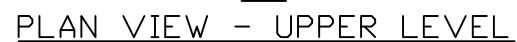


**MATERIAL HANDLING SOLUTIONS**

6720 N. TEUTONIA AVE.  
MILWAUKEE, WI 53209  
P (414) 352-9000  
F (414) 352-9002

THIS PRINT INCLUDING THE DESIGN AND PRINCIPLES OF CONSTRUCTION IS THE PROPERTY OF PFLOW INDUSTRIES, INC. AND MUST BE RETURNED ON DEMAND. THE INFORMATION CONTAINED HEREON IS CONFIDENTIAL AND MAY NOT BE USED NOR DIVULGED WITHOUT PERMISSION OF PFLOW INDUSTRIES, INC.

TITLE				
SERIES D DIMENSIONAL INFORMATION				
DATE	3/19/96	SCALE	N.T.S.	DRAWING NUMBER
DRAWN	PCP	CHECKED		9424-0008
				SHT 4 OF 4
				REV G



- |   |          |     |        |
|---|----------|-----|--------|
| G | 10/26/18 | AEB | 18.07  |
| F | 4/25/13  | AEB | 12.10  |
| E | 10.13.06 | MRR | 06.017 |
| D | 12/13/01 | MN  | 01.030 |
| C | 2/4/99   | MHS | 98.052 |
| B | 12/12/97 | MHS | 97.057 |

REV	DATE	BY	ECN
REVISIONS			

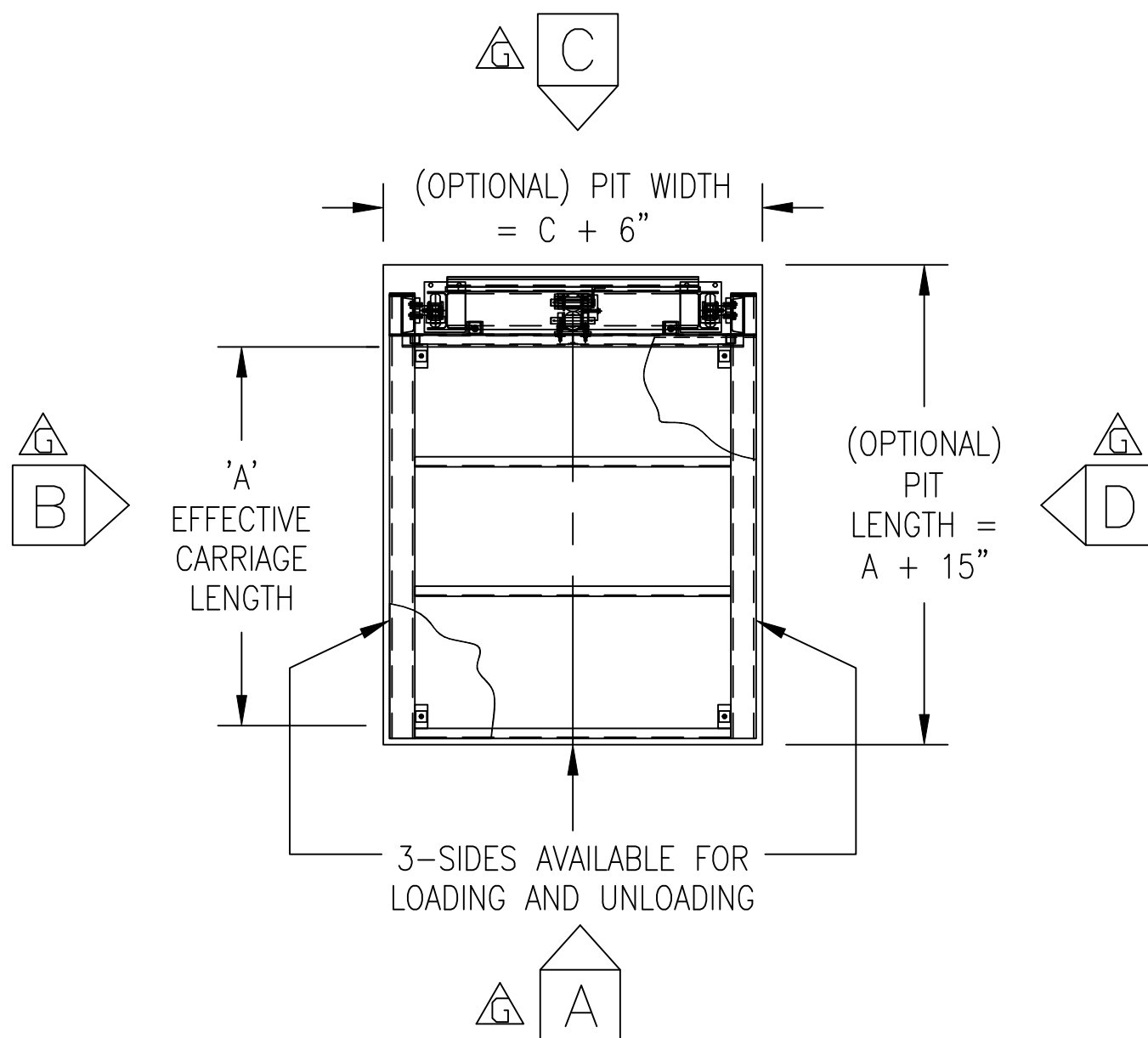


6720 N. TEUTONIA AVE.  
MILWAUKEE, WI 53209  
P (414) 352-9000  
F (414) 352-9002

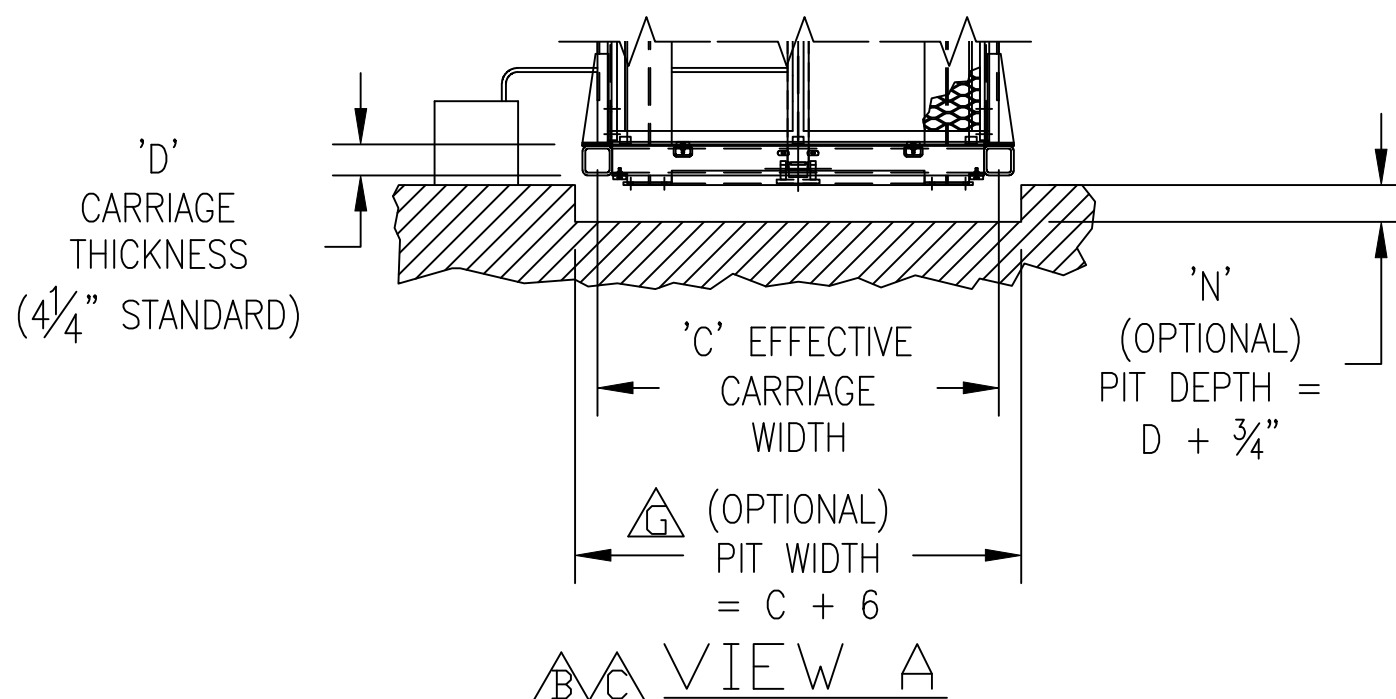
THIS PRINT INCLUDING THE DESIGN AND PRINCIPLES OF CONSTRUCTION IS THE PROPERTY OF PFLOW INDUSTRIES, INC. AND MUST BE RETURNED ON DEMAND. THE INFORMATION CONTAINED HEREON IS CONFIDENTIAL AND MAY NOT BE USED NOR DIVULGED WITHOUT PERMISSION OF PFLOW INDUSTRIES, INC.

TITLE	SERIES D DIMENSIONAL DRAWING
-------	---------------------------------

DATE	3/19/96	SCALE	N.T.S.	DRAWING NUMBER	SHT	REV
DRAWN	PCP	CHECKED		9424-0008	1	G
					OF 1	



**PLAN VIEW - LOWER LEVEL**



**VIEW A**

C	10/26/18	AEB	18.071
B	4/25/13	AEB	12.101
A	3/5/03	DMB	03.007
REV	DATE	BY	ECN
REVISIONS			

- NOTES:
1. ALL DIMENSIONS SHOWN ARE REPRESENTATIVE OF AVERAGE APPLICATIONS. THESE DIMENSIONS WILL CHANGE BASED ON APPLICATION SPECIFIC CONDITIONS.
  2. CONSULT FACTORY BEFORE CONSTRUCTION OF PIT.
  3. IF CARRIAGE IS OVER 6'-0 SQ. OR 3000#, CONSULT FACTORY.



**MATERIAL HANDLING SOLUTIONS**

6720 N. TEUTONIA AVE.  
MILWAUKEE, WI 53209  
P (414) 352-9000  
F (414) 352-9002

THIS PRINT INCLUDING THE DESIGN AND PRINCIPLES OF CONSTRUCTION IS THE PROPERTY OF PFLOW INDUSTRIES, INC. AND MUST BE RETURNED ON DEMAND. THE INFORMATION CONTAINED HEREON IS CONFIDENTIAL AND MAY NOT BE USED NOR DIVULGED WITHOUT PERMISSION OF PFLOW INDUSTRIES, INC.

TITLE				
SERIES D PIT DIMENSIONAL INFORMATION				
DATE	8/31/01	SCALE	N.T.S.	DRAWING NUMBER
DRAWN	BL	CHECKED		9424-0008-PIT
				SHT 1 OF 1
				REV C