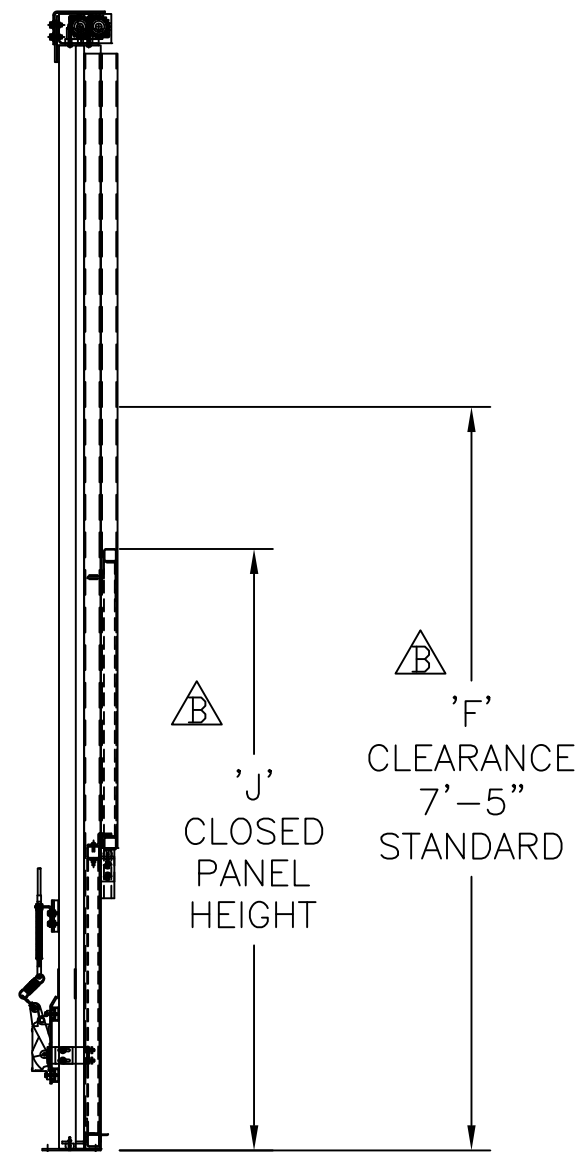
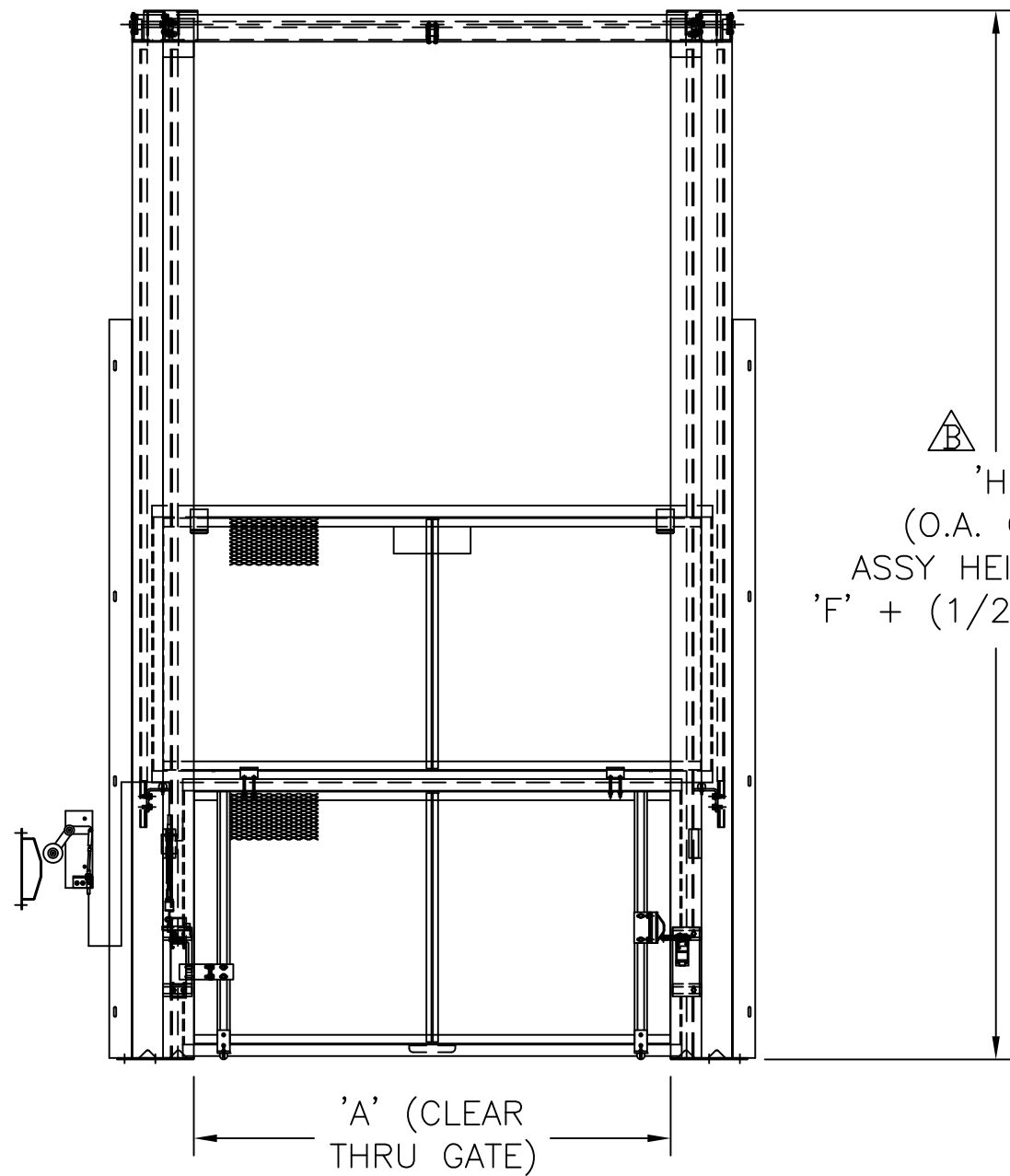
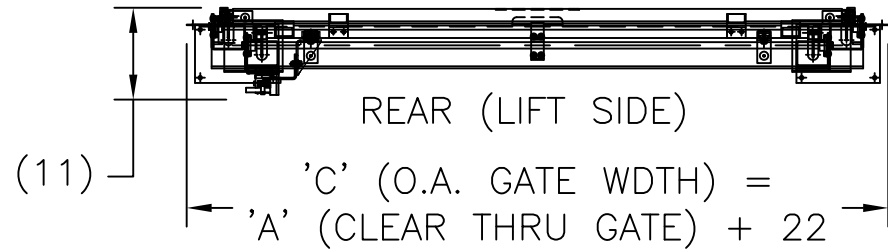


FRONT




BI-PANEL
VERTICAL ACTING GATE

- STANDARD HEIGHT IS:
- △ 10'-10" WITH 6'-0" COMBINED PANELS
- △ 9'-10" WITH 4'-0" COMBINED PANELS
- MAXIMUM WIDTH IS 17'-0"

INTERLOCKS

- △ - ANDERSON OR CABLE ACTUATED ANDERSON



UNLESS OTHERWISE INDICATED : ALL DIMENSIONS ARE IN INCHES.				 PFLOW INDUSTRIES, INC. 6720 North Teutonia Ave. Milwaukee, WI 53209 (414) 352-9000 (414) 352-9002 FAX info@pflow.com													
TOLERANCES : FRACTIONAL ± 1/16 DECIMAL .XX ± .03 .XXX ± .015 ANGULAR : ± 1° MACH. SURFACE FINISH : 250 DO NOT SCALE DRAWING!																	
<table border="1"> <tr> <td>REV</td> <td>DATE</td> <td>BY</td> <td>ECN</td> </tr> <tr> <td>B</td> <td>4/25/13</td> <td>AEB</td> <td>12.101</td> </tr> <tr> <td>A</td> <td>8/21/98</td> <td>MHS</td> <td>98.030</td> </tr> </table>				REV	DATE	BY	ECN	B	4/25/13	AEB	12.101	A	8/21/98	MHS	98.030	TITLE BI-PANEL VERTICAL ACTING GATE DIMENSIONAL INFORMATION	
REV	DATE	BY	ECN														
B	4/25/13	AEB	12.101														
A	8/21/98	MHS	98.030														
REVISIONS				DATE 6/19/98	SCALE N.T.S.												
REFERENCE (NUMBER)				DRAWN JWH	CHECKED												
				DRAWING NUMBER 9424-0017	SHT OF 1 1												
					REV B												